

# 150 YEARS OF RICHES: THE CENTRAL OTAGO GOLD RUSH, 1862 - 2012

WEDNESDAY 29 TO FRIDAY 31 AUGUST, 2012,  
GOLDEN GATE LODGE CONFERENCE CENTRE  
CROMWELL, NEW ZEALAND



IN ASSOCIATION WITH



CONFERENCE PROGRAMME & REGISTRATION

### *Conference Convenor:*

Lloyd Carpenter

English Programme, College of Arts, University of Canterbury

Email: [lloyd.carpenter@pg.canterbury.ac.nz](mailto:lloyd.carpenter@pg.canterbury.ac.nz)

### *Programme at a glance:*

#### **Tuesday 28 August, 2012**

Pre conference field trip

Hosted by the Central Otago Goldfields Heritage Trust: Details and costs to be advised (this is a separate cost to the conference).

#### **Wednesday 29 August, 2012**

Welcome

Keynote speakers

Sessions

Evening: 'A Taste of Central: The best of Central Otago's Wine and Gourmet Food' - details to follow.

#### **Thursday 30 August, 2012**

Sessions

Conference dinner

#### **Friday 31 August, 2012**

Sessions

Conference Closing Speech: Hon. Jacqui Dean

Member of Parliament for Waitaki

#### **Saturday 1 September, 2012**

Optional Field trip:

9.30am - 3.30pm Meeting at the Bendigo Historic Reserve,  
Loop Road, Bendigo near the Scott's Bakery ruin.

University of Canterbury Doctoral Candidate and Bendigo Historian  
Lloyd Carpenter will host 'A Day on Bendigo'.

A moderate level of fitness and good footwear, a packed lunch and a filled  
water bottle is required

Cost: \$20 Donation to the Department of Conservation (paid to Lloyd)

### *Conference website:*

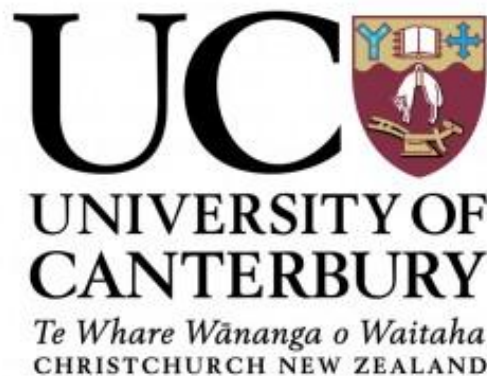
Programme updates will be available on the conference website: <http://www.hums.canterbury.ac.nz/eng/centralgold150/>

### *Keynote speakers:*

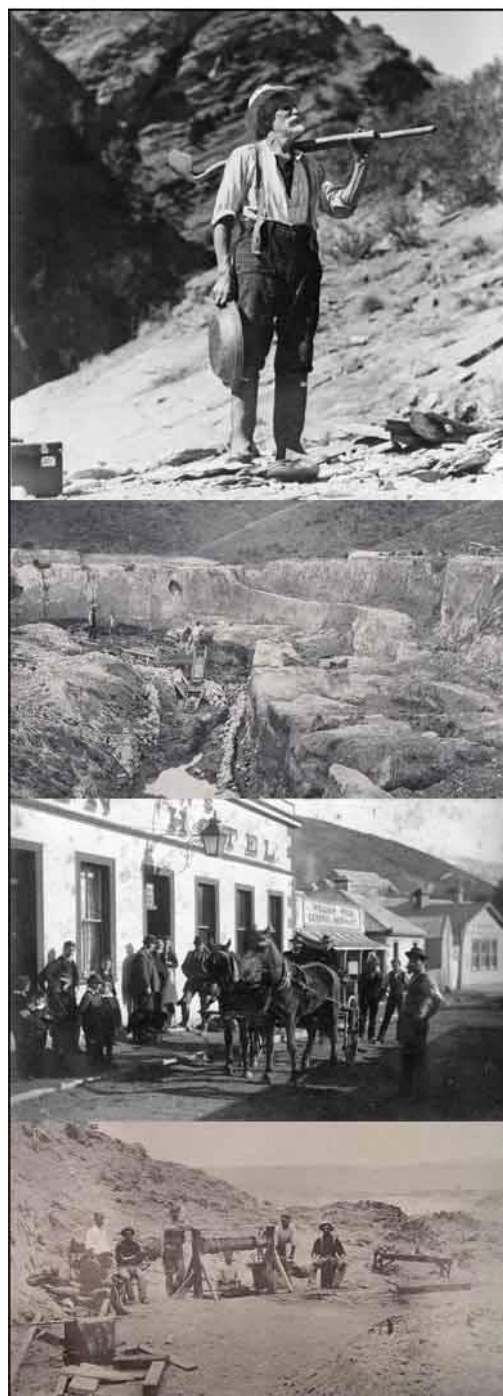
[Dr Warwick Frost of LaTrobe University.](#)

Dr Frost brings considerable Goldfields History, Heritage Tourism and Australian Studies expertise and publication experience to the conference.

Second keynote speaker to be advised.



**150 YEARS OF RICHES:**  
**THE CENTRAL OTAGO GOLD RUSH, 1862 - 2012**





## Conference Rationale:

On August 22, 1862 New Zealand's pioneer history changed. 16 months after Gabriel Read found gold in the Tokomairiro, two Californian goldminers, Horatio Hartley and Christopher Riley lodged 87 pounds of gold wrested from the interior of the province of Otago with the Dunedin gold buyer's office.

This launched the Central Otago gold rush.

The University of Canterbury will play a lead role in the celebration of the Central Otago gold rush sesquicentennial by hosting a significant academic conference near where it began in Cromwell, Central Otago.

The "150 Years of Riches: The Central Otago Gold Rush, 1862 – 2012" will take a critical new look at this gold rush and the events surrounding it.

### NEW DIGGINGS

NEAR

MOUNT WATKINS.

EIGHTY-SEVEN POUNDS WEIGHT OF  
GOLD.

Yesterday afternoon two men went to the Treasury in Dunedin and deposited a bag of gold weighing eighty-seven pounds. They declined to say where they had obtained this rich parcel, but stated that there was room for plenty more men where they had been working. The names of the two men are Hartley and Simmons.

Although the owners refused to state where they had obtained their gold, we believe there is no doubt that it is from the neighborhood of Mount Watkins, near Waikouaiti. It will be remembered that there have from time to time been reports of a party of men with a pack-horse coming into Waikouaiti occasionally at night, and always leaving before morning. We are informed that these two men belong to that party, that they are old Californian miners, and that they first went to Waikouaiti about ten weeks ago. Many people have suspected that they were doing well, but nobody has yet succeeded in tracing them out. It is understood that they were digging somewhere about Mount Watkins, and now that the extreme richness of the ground is so convincingly proved, it is to be presumed they will no longer be able to evade the search that will be made.

### DAILY TIMES OFFICE,

MONDAY, AUG. 18, 4.30 P.M.

After some negotiations an arrangement was this day come to between the Provincial Government and the discoverers of the new gold field, and the prospectors made the following statement:—

#### STATEMENT OF THE MEN.

We started on a prospecting trip about the 1st of February last, crossing the Molyneux at Oliver's, and striking it again about twenty miles above Pinkerton's. We here obtained sufficient prospects from the banks of the river to justify us in believing that we should find rich diggings higher up the streams, or as soon as we came to a favorable place. About twelve or fifteen miles below the junction of the Manuherikia we first obtained payable prospects. We tried a number of small bars that we thought would pay about an ounce a-day by working with a cradle. The river was very high at the time, and but little of the bars being out of water, we could not tell much about it, but the diggings on this part of the river will not possibly be of much extent. There are, however, for ten or fifteen miles below where we obtained our prospects—flats, and what appear to be old channels of the river, some of them several miles in length. We attempted to prospect several of them, but having no bucket or rope, and besides having the misfortune to break our shovel so as to render it valueless for sinking, we were not able to bottom, and were obliged to push on. The rich part of the river where we obtained the gold is between the Manuherikia and Upper Clutha Valleys. By the time we arrived here our provisions were exhausted, and our tin dish broken by a fall on a hill-side, so that we could only wash a few handfuls of dirt at a time. We bought a little flour, and borrowed a tin dish from one of the stations in the Manuherikia Valley, and panned out forty ounces in about a week. We then went up the river as far as the junction of the Kawarau, and having satisfied ourselves that there was plenty more gold to be had, we started for Dunedin to get pack-horses and an outfit for a winter campaign. We returned by the way of Waikouaiti and the Shag Valley. We did not cross the river at the old place, as we wished to avoid the people at the station, who had seen us before. Our object was to work only the richest spots, as we did not know how soon we might be discovered and "rushed." For the first month or six weeks, we were well satisfied with two or three ounces a day each, but as the river became lower, and we learned more of the nature and extent of the diggings, we did not wash anything unless we thought it would pay about a pound weight a day—that is, six ounces each. The best dirt we found was the surface dirt on the bars. We did not usually wash more than from three to six inches of the top dirt—a loose sandy gravel easily washed, but in some places we took from one to two feet of it. We had nothing to do but to set the cradle at the edge of the river, and keep it going from morning to night, as one could get dirt and feed the cradle as fast as the other could wash it. The gold is very fine,

## How to Register:

Please complete and return the registration form on the next page.

### Payment

Payment can be made by cheque, payable to: "Canterbury University", or credit card - MasterCard or Visa (American Express and Diners are not accepted) All prices quoted are in New Zealand Dollars and inclusive of GST.

Please DO NOT send in your cheque without the registration form.

Please note that payment should accompany your registration form, and your place will not be confirmed until payment has been received. Invoiced registrations will be cancelled if payment is not received within 10 working days of invoice.

**Full conference registration includes:** Attendance at all conference sessions, delegate conference materials, morning and afternoon tea, lunches, social function on Wednesday night and Conference Dinner on Thursday night.

### Acknowledgment

All registrations will be acknowledged by email, please include the email address you would like your confirmation to go to and please write clearly. If you do not receive an acknowledgment email, please contact the conference convener on [lloyd.carpenter@pg.canterbury.ac.nz](mailto:lloyd.carpenter@pg.canterbury.ac.nz).

### Registration desk location and opening times

Your registration pack will be available for collection from the registration desk located in The Conference Centre at the Golden Gate Lodge, . The registration desk will be open 3pm Tuesday 17 January and remain open through out the conference.

### Special requirements

Please give details on your registration form of any special dietary requirements or disability assistance required.

## Cancellation / Refund Policy

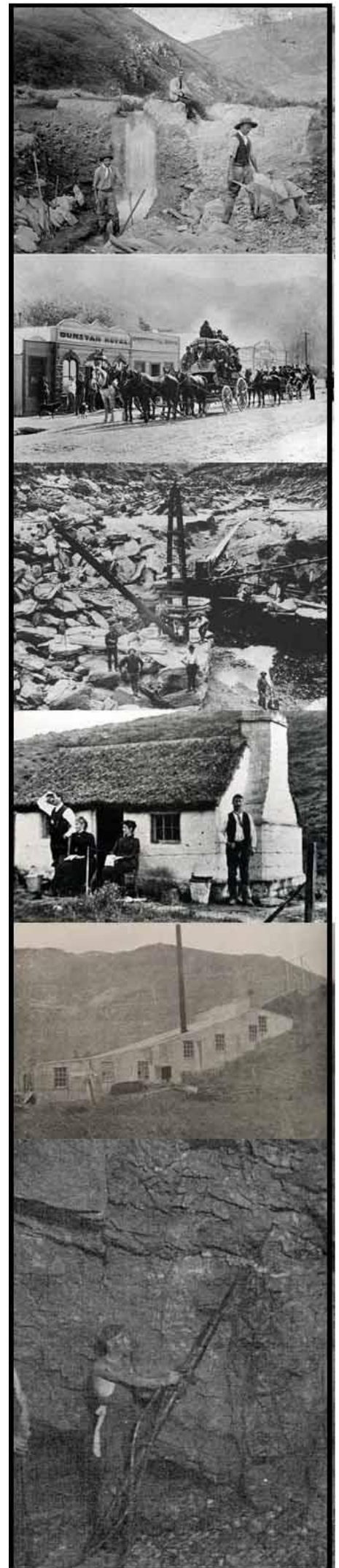
All cancellations must be made in writing to the Conference Secretary. You may assign your registration to another person. If you are unable to attend, the following cancellation fees apply: Fourteen days before the conference start date—refund less \$75 administration fee, thereafter refunds will be made at the discretion of the organising committee. Refund payments will be made after the conference.

### Insurance

Delegates are encouraged to take out personal travel and medical insurance which includes loss or damage of personal possessions, including loss of registration and accommodation fees through cancellation.

### Disclaimer

In the event of industrial disruption, or other unforeseen circumstances that disrupt the conference, the conference organisers accept no responsibility. The information on the conference website and in the printed material is correct at the time of publication. The conference organisers reserve the right to change information. If, for reasons beyond the control of the organising committee, the conference is cancelled, registration fees will be refunded after deduction of expenses already incurred.



# 150 Years of Riches: The Central Otago Gold Rush, 1862–2012 Conference Registration Form



This registration form becomes a tax invoice upon payment. GST number: 10 418 585

Please complete and return to: Gold Rush Conference  
English Department,  
University of Canterbury  
Private Bag 4800  
CHRISTCHURCH 8140

Fax: + 64-3-3642065  
Email: lloyd.carpenter@pg.canterbury.ac.nz

Full Name and Title: (as preferred on badge)	
Position:	
Institution:	
Address:	
Phone No: Business Phone No: Home	
Fax No:	
Email:	

Special Dietary Needs	
Disability assistance	
Audio-visual requirements (for speakers)	

Registration Fees: (includes all meals and conference dinner)	Cost in NZ\$ (GST incl.)	Please tick
Waged	475	
Early-bird registration (closes 28/2/12)	425	
Student/unwaged	425	
Central Otago resident	395	
<b>Total amount forwarded</b>	\$	

## PAYMENT METHOD

**Cheque** made payable to "The University of Canterbury" (send to address above)

**Credit card**

Card Type (circle one)	<input type="checkbox"/> Visa <input type="checkbox"/> Mastercard
Card Number	
Name on Card	
Expiry Date	Card Verification Code
Signature of cardholder	
Amount to be debited	\$NZ
	Date

**Direct payment**

Bank Name: ANZ Bank  
 Account Number: 01 1839 0036732 00  
 Account Name: University of Canterbury  
 Swift (Routing) Number: ANZBNZ22  
 Branch Name: Auckland (Q&V)  
 Bank Address: Corner Queen and Victoria Street, Auckland  
**Please quote "Gold Rush Conference" when making payment**

## Conference Location:

The Conference will be based at the Golden Gate Lodge in Cromwell, (6 Barry Avenue, Cromwell 9310) and a preferential rate which includes breakfast has been offered to Conference attendees. Please quote the "150 Years of Riches: The Central Otago Gold Rush, 1862 – 2012" in your booking enquiry to access this deal.

Their website may be found here: <http://www.goldengate.co.nz/index.html>

There is also a wide range of Motel, campground and Hotel accommodation available within walking distance of the conference centre in Cromwell. Other nearby towns are Alexandra (45 minutes), Clyde (35 minutes), Queenstown (45 minutes), Arrowtown (35 minutes) and Wanaka (40 minutes).

The nearest international airport is at Queenstown (45 minutes driving time).

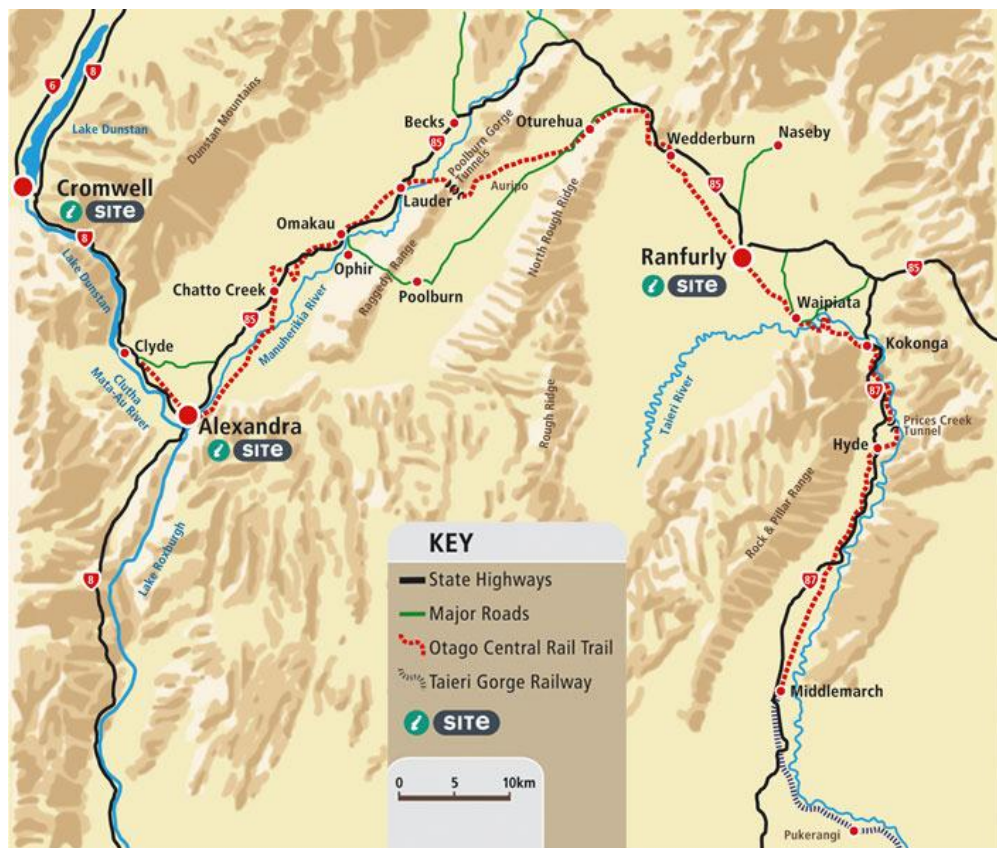
For other centres: Cromwell is 2 hours, 45 minutes from Dunedin; 5 hours, 15 minutes from Christchurch.

For information about other events and attractions in Central Otago, visit:

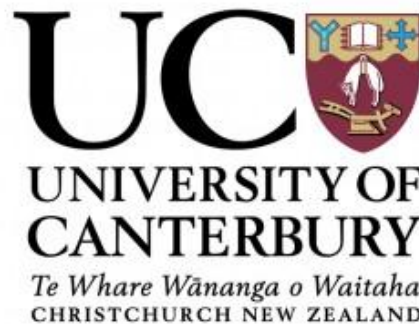
<http://www.centralotagonz.com/>

For the more adventurous/fit, extend and enhance your visit by cycling the world-famous Central Otago Rail Trail. Bike hire, guiding options and information available at:

<http://www.centralotagonz.com/otago-central-rail-trail>



(Source: [http://www.centralotagonz.com/Central-Otago/Rail-Trail-Map\\_IDL=24\\_IDT=294\\_ID=1520\\_.html](http://www.centralotagonz.com/Central-Otago/Rail-Trail-Map_IDL=24_IDT=294_ID=1520_.html))



150 YEARS OF RICHES:  
THE CENTRAL OTAGO GOLD RUSH, 1862 - 2012

